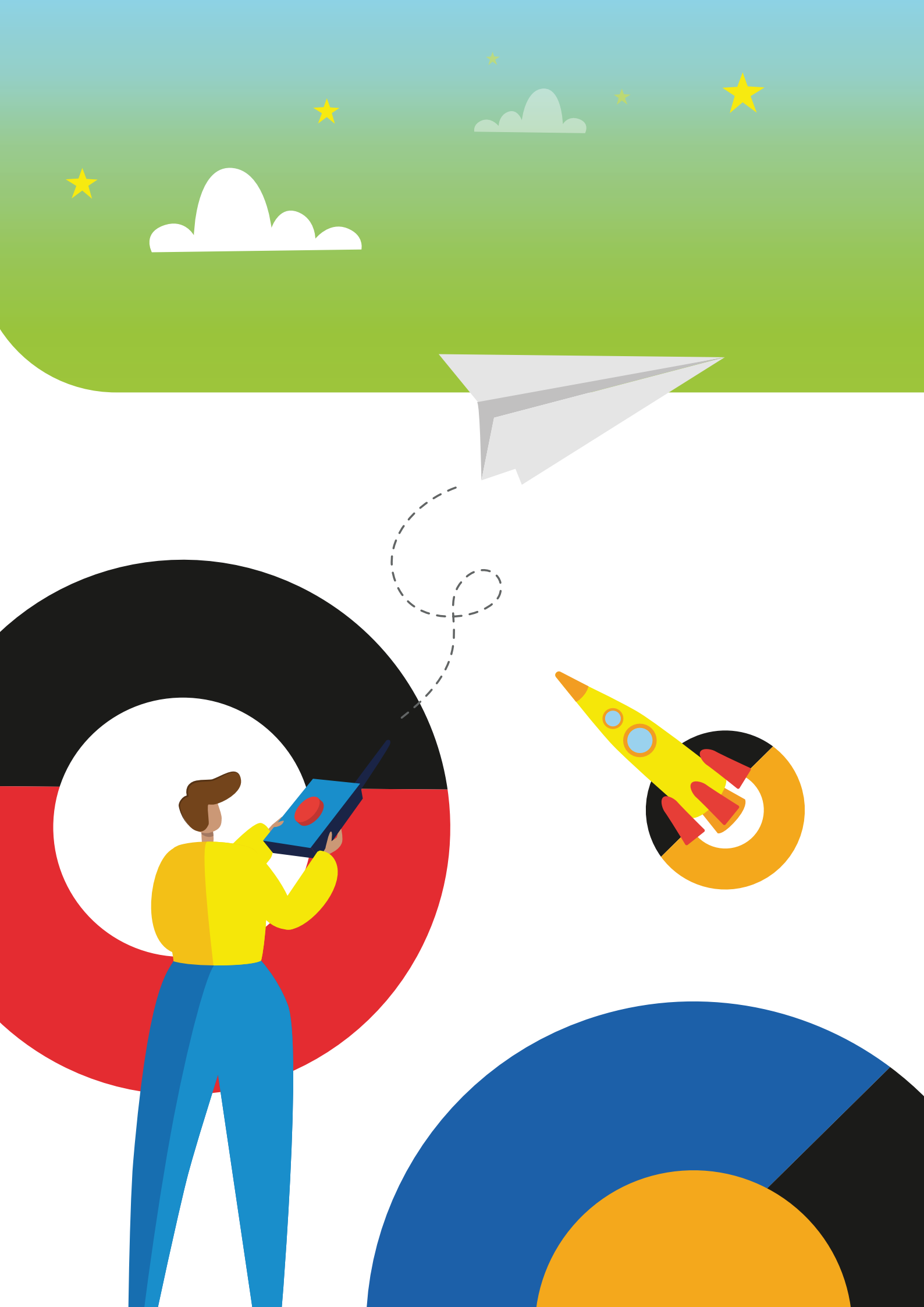




FRAMEWORK

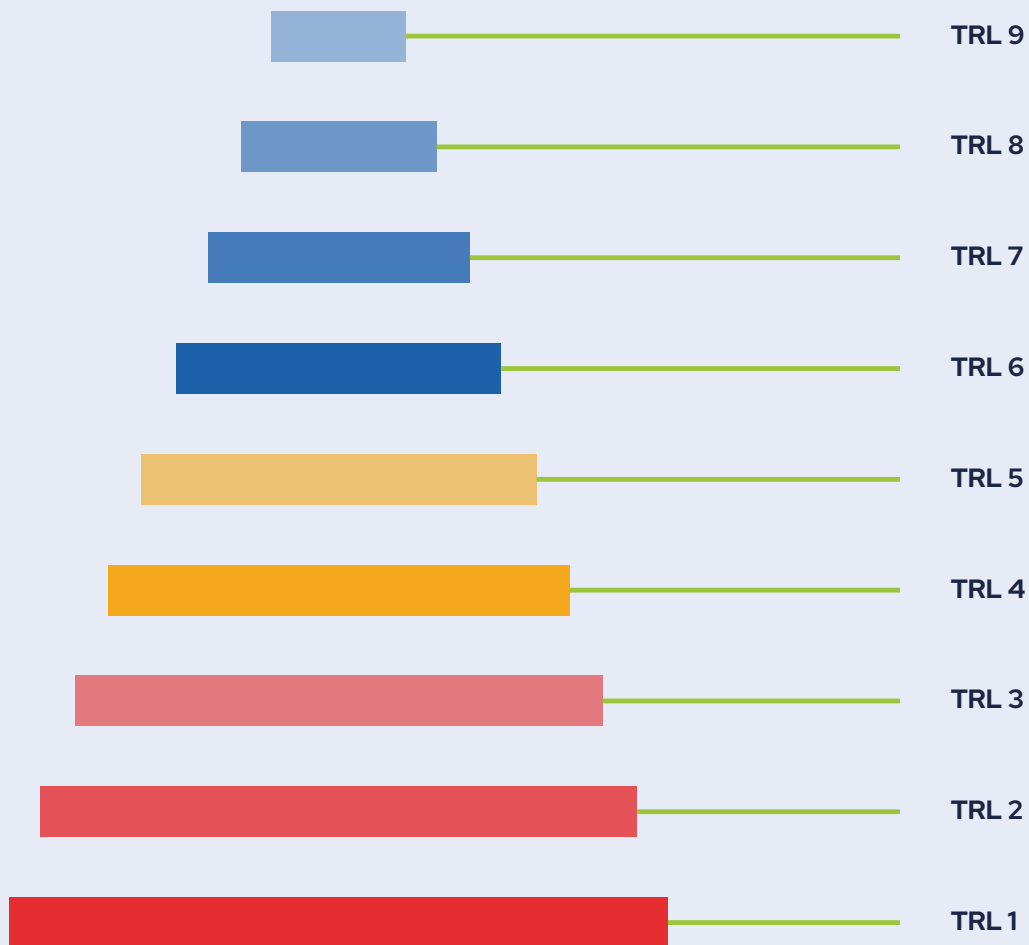
PROGRAMME UNIT

#HorizonEU



TECHNOLOGY READINESS LEVEL

Funding schemes within the R&I Unit span across both early stage and applied research, thus targeting research between TRL 1 - TRL 8.



TRL 9

System Proven in an Operational Environment

TRL 8

System Completed & Qualified

TRL 7

System Prototype Demonstrated in the intended Environment

TRL 6

Technology Demonstrated in a Relevant Environment

TRL 5

Technology Validated in a Relevant Environment

TRL 4

Technology Validated in a Lab

TRL 3

Experimental Proof of Concept

TRL 2

Technology Concept Formulation

TRL 1

Basic Principles Observed



WHAT IS HORIZON EUROPE?



WHAT IS HORIZON EUROPE?

Horizon Europe is the EU's key funding programme for R&I, having a budget of **EUR 95.5 Billion**.



PILLAR 1 EXCELLENT SCIENCE

European Research Council

Marie Skłodowska-Curie
Actions

Research Infrastructures



PILLAR 2 GLOBAL CHALLENGES & EUROPEAN INDUSTRIAL COMPETITIVENESS

CLUSTERS

Health

Culture, Creativity and
Inclusive Society

Civil Security for Society

Digital, Industry and Space

Climate, Energy and Mobility

Food, Bioeconomy, Natural
Resources, Agriculture and
Environment

Joint Research Centre



PILLAR 3 INNOVATIVE EUROPE

European Innovation Council

European innovation
ecosystems

European Institute of
Innovation and Technology

WIDENING PARTICIPATION AND STRENGTHENING THE EUROPEAN RESEARCH AREA

Widening participation and spreading excellence

Reforming and Enhancing the European R&I system



01

PILLAR



THE EUROPEAN RESEARCH COUNCIL (ERC)

ERC Funds excellent bottom-up frontier research. It supports creative researchers of any nationality and age, to run groundbreaking projects based across Europe. The ERC offers 4 core grant schemes - **Starting Grants, Consolidator Grants, Advanced Grants** and **Synergy Grants**. ERC Super Grants will be also introduced.

Find out more

<https://erc.europa.eu/homepage>

THE MARIE SKŁODOWSKA-CURIE ACTIONS (MSCA)

MSCA Funds excellent R&I and equips researchers at all stages of their career with new knowledge and skills, through mobility across borders and exposure to different sectors and disciplines.

Find out more: <https://marie-sklodowska-curie-actions.ec.europa.eu/>

RESEARCH INFRASTRUCTURES

Research infrastructures (RIs) are facilities that provide resources and services for research communities to conduct research and foster innovation in their fields.

For more information on open opportunities within Research Infrastructures, please refer to the funding and tenders portal **reference documents** and click on the latest Work Programme for Research Infrastructures.

02

PILLAR



Pillar 2 of Horizon Europe focuses on Global Challenges and European Industrial Competitiveness. It aims to address major societal challenges, enhance industrial capacities, and drive innovation to achieve the United Nations' Sustainable Development Goals (SDGs).

The second Pillar consists of the six clusters:

- ▶ ***Health***
- ▶ ***Culture, Creativity and Inclusive Society***
- ▶ ***Civil Security for Society***
- ▶ ***Digital, Industry and Space***
- ▶ ***Climate, Energy and Mobility***
- ▶ ***Food, Bio economy, Natural Resources, Agriculture and Environment***

For more information on open opportunities within Pillar 2, please refer to the funding and tenders portal **reference documents** and click on the latest Work Programme for the Cluster you are interested in.

HORIZON EUROPE MISSIONS

Horizon Europe Missions are ambitious initiatives aimed at addressing major societal challenges through R&I, with specific goals to be achieved by 2030. The five missions are:

- ▶ ***Climate Mission***
- ▶ ***Cities Mission***
- ▶ ***Soil Mission***
- ▶ ***Ocean Mission***
- ▶ ***Cancer Mission***

The New European Bauhaus is a parallel initiative to the missions, which aims to blend sustainability, aesthetics and inclusivity to create more beautiful, sustainable and inclusive living spaces across Europe.

For more information on open opportunities within the Missions , please refer to the funding and tenders portal **reference documents** and click on the latest Missions Work Programme.



HORIZON EUROPE PARTNERSHIPS

Horizon Europe partnerships are collaborative initiatives between the EU, Member States, industry and research organisations. They pool resources to tackle global challenges, drive innovation and strengthen Europe's competitiveness. Covering areas like health, climate, digital and energy, they align public and private investments to deliver solutions with broad societal impact.

More information here : **[European Partnerships in Horizon Europe](#)**



03

PILLAR



Pillar 3 of Horizon Europe is focused on private sector support, innovation ecosystems and partnerships.

THE EUROPEAN INNOVATION COUNCIL (EIC)

The European Innovation Council is there to support breakthrough innovation. Its main targets are SMEs, as well as research and education institutions for initial technology development. There are 3 types of calls offered through the EIC with opportunities available for all technology readiness levels (TRLs), from Research and development, to scale up.

Find out more : https://eic.ec.europa.eu/index_en

THE EUROPEAN INSTITUTE OF INNOVATION AND TECHNOLOGY (EIT)

EIT is Europe's largest innovation community and supports the creation of partnerships between higher education, research, public and private actors to create innovation communities for pressing global challenges.

Find out more : <https://eit.europa.eu/global-challenges/about-our-communities>

THE EUROPEAN INNOVATION ECOSYSTEMS (EIE)

EIE focuses on building an interconnected, inclusive innovation ecosystem that encompasses European, national, regional and local initiatives.

Find out more : [European Innovation Ecosystems](#)

WIDENING PARTICIPATION AND STRENGTHENING THE EUROPEAN RESEARCH AREA

R&I (R&I) policy can only strive towards more excellence if everyone progresses. The EU's R&I system needs to promote a more inclusive approach in which all can participate and from which all can benefit. Existing disparities between R&I leading and lagging countries can be tackled by introducing structural policy reforms.

Find out more : [Widening participation and spreading excellence - European Commission](#)

OTHER INITIATIVES

EUROPEAN COOPERATION IN SCIENCE AND TECHNOLOGY (COST)

COST (European Cooperation in Science and Technology) is a funding organisation responsible for funding R&I networks.

EURATOM

The Euratom programme makes a strong emphasis on developing nuclear skills and competence. This will allow Europe to maintain world leadership in nuclear safety and waste management, and to attain the highest level of protection from radiation.

Find out more : **Euratom Research and Training Programme - European Commission**



FUNDING RATE AND ELIGIBILITY CONDITIONS

In most part, participation in Horizon Europe calls is collaborative in nature and requires that researchers collaborate on behalf of their entities. This is especially true in Pillar 2.

ELIGIBILITY CONDITIONS:

- ▶ Participation is reserved to legal entities coming from an EU Member State (MS) or an Associated Country (AC); List of Associated Countries
- ▶ Collaboration with at least 3 entities from 3 different countries. This implies that an entity from Malta must identify and join forces with at least another 2 entities from MS or AC. Must not be affiliated or spinoffs;
- ▶ Gender Equality Plan (GEP) is a requirement for Academia, Public bodies and research organisations;
- ▶ PIC number by signing of Grant agreement.

FUNDING RATE

Topics in these calls are mainly classified into three different Actions. These Actions classify the different funding rates for the different entities that are funded and the Technology Readiness Levels (TRLs) that the project will reach by the end of their tenure. An indirect cost of 25% is applicable for all 3 headings below and subject to the entity classification for respective eligible action.

RESEARCH AND INNOVATION ACTION

Actions that establish new knowledge or develop new technologies or solutions.



EU funding rate: 100%
Minimum: 3 beneficiaries
TRL 1 - 5

INNOVATION ACTIONS

Actions that demonstrate the viability of new technologies and solutions or support their first deployment in the market.



EU funding rate: 70%*
Minimum: 3 beneficiaries
TRL 5 - 8

*100% for non-profit legal entities

COORDINATED AND SUPPORT ACTIONS

Actions that improve skills, mobilise large-scale investments or facilitate EU policy implementation.



EU funding rate: 100%
Minimum: 1 beneficiary

ELIGIBLE COSTS



A. PERSONAL COSTS

- A.1 Employees
- A.2 Natural persons under direct contract
- A.3 Seconded persons
- A.4 SME owners and natural person beneficiaries



B. SUBCONTRACTING COSTS



C. PURCHASE COSTS

- C.1 Travel and subsistence
- C.2 Equipment
- C.3 Other goods, works and services



D. OTHER COST CATEGORIES

- D.1 Financial support to third parties
- D.2 Internally invoiced goods and services
- D.3 Transnational access to research infrastructure unit costs
- D.4 Virtual access to research infrastructure unit costs
- D.5 PCP/PPI procurement cost
- D.6 Euratom Cofund staff mobility cost(s)
- D.7 ERC additional funding
- D.8 ERC additional funding (subcontracting, FSTP and internally invoiced goods and services)



E. INDIRECT COSTS

The indirect costs are calculated at 25% of the total costs for section A, C and D.

SUPPORT SCHEMES

At **Xjenza Malta**, five support schemes are available to provide monetary assistance to applicants to ease Horizon Europe participation. The rules and templates of the schemes can be found [here](#).

1. HORIZON EUROPE NETWORKING SUPPORT SCHEME (NET2HE)

NET2HE is offering stakeholders from Malta the financial support to attend Horizon Europe networking and brokerage events held overseas (in Member States or Associated Countries). The aim is to incentivise Maltese participation in brokerage sessions and networking events to form connections.

NET2HE fully funds flights and travel insurance with a capping of EUR 750. Additionally, a flat rate of EUR 150 per night is disbursed. The duration of the travel depends on the agenda of the event, however there is a 5-night limit for which the per diem rate is paid.

The National Contact Points are constantly looking out for relevant events that can be supported with the NET2HE scheme. We highly encourage our community to make use of the "List of events". After the applicant returns from their selected event, they should submit a "Travel Report" along with the "NET2HE Reimbursement Form" to facilitate the reimbursement process for the eligible expenses.

Applications should be submitted at least 15 working days before the start of the event. Late or incomplete applications will not be considered.

2. HORIZON INTERNATIONALISATION PARTNERSHIP AWARDS SCHEME (HIPAS)

The Horizon Internationalisation Partnership Award Scheme (HIPAS) supports Maltese eligible entities intending to submit a Horizon Europe proposal (including Partnerships indicated in the Scheme Rules), as a Coordinator entity to engage a service provider (local or foreign) who will be supporting the applicant entity through proposal writing and submission. The support is limited to € 8,000 (inclusive of VAT) with some exceptions. The service providers/consultants must have extensive experience and proven track record in helping applicants obtain Horizon Europe funds.

The scheme works through reimbursement based on eligible costs, following the submission of a final report (based on a template) and supporting documents such as invoices, receipts and proof of submission to the Horizon Europe call/topic through the Funding and Tenders portal (screenshot or email).

The call typically opens at the beginning of each calendar year with 3 official deadlines in between.

Following the submission of a dedicated application form, an administrative check and an external evaluation takes place. If the application is selected for funding, a Grant Agreement is signed with a one-year duration (with no extension possible).

3. POSTDOCTORAL FELLOWSHIP TRAINING SCHEME FOR INCOMING POSTDOCS TO MALTA (PF2MT)

The Postdoctoral Fellowship Training Scheme for Incoming Postdocs to Malta (PF2MT) supports travel and accommodation expenses for Ph.D. holders willing to submit a proposal with a Maltese entity host for the **MSCA Postdoctoral Fellowship call**.

The support is in the form of a lump-sum grant and it is for the participation of the researchers in the MSCA Postdoctoral Fellowship masterclass training that is being held every year in Malta in June/July. Researchers, of any nationality and any age, who meet the eligibility and mobility conditions, may apply through this scheme.

The training will enhance the proposal writing skills of the researchers and increase their chance of success. The funding is a form of a lump sum – Eur 800 for participants from EU Member States or Horizon Europe Associated Countries and Eur 2,000 for applicants from Third Countries.

Following their participation in the training, participants will receive 50% of the lump sum grant upon submission of boarding passes, while the remaining 50% will be sent following submitting the application with a Maltese beneficiary/Maltese entity as a host and providing proof of it.

4. EUROPEAN RESEARCH COUNCIL (ERC) SUPPORT SCHEME

The ERC Support Scheme aims to strengthen the opportunities for talented researchers to obtain grants from the **ERC (European Research Council)** for excellent and ground-breaking research based on researchers' own ideas within all areas of research. The Scheme is divided into two options and applicants may select Option A, Option B or both:

OPTION A - MENTORING INITIATIVE

The mentoring initiative will support potential ERC applicants by helping to identify international experts to provide coaching and advice.

Applicants interested in benefitting from the ERC Mentoring Initiative are to indicate their interest, and detail the mentoring activities they require. An expected workload and envisaged compensation for the mentors are to be specified.

The maximum cost for Option A should be up to €5000 (inclusive of VAT). The Mentors are to be selected from a list of Mentors, which will be provided by Xjenza Malta;

OPTION B - PROPOSAL WRITING TRAINING

The objective of this activity is to raise the capabilities of potential ERC candidates to prepare successful ERC grant applications through attending ERC proposal writing training.

The training activities may take place in any EU Member State or Associated Country physically or online. The trainers must have extensive experience and a proven track record in running ERC workshops and helping successful ERC grantees. The maximum cost for Option B should be up to €2000 (inclusive of VAT).

The call typically opens at the beginning of each calendar year with official deadlines in between. Following the submission of a dedicated application form, an administrative check and an external evaluation takes place. If the application is selected for funding, a Letter of Intent is issued.

The scheme works through reimbursement based on eligible costs, following the submission of a final report (based on a template) and supporting documents such as invoices, receipts and proof of submission to the ERC call through the Funding and Tenders portal (screenshot or email).

5. EUROPEAN INNOVATION COUNCIL (EIC) AND IT'S SUPPORT SCHEME

The European Innovation Council is the EU's flagship programme under Horizon Europe dedicated to supporting visionary research and breakthrough innovations with high market potential. With a budget of over €10 billion, the EIC provides a unique funding pathway through three complementary instruments.

	EIC PATHFINDER AND PATHFINDER CHALLENGES	EIC TRANSITION	EIC ACCELERATOR & ACCELERATOR CHALLENGES
TRLs	1-4	4-6	6-9
WHO CAN APPLY	Consortia of research teams, universities, SMEs, start-ups and industrial partners	Single SMEs/start-ups or consortia (universities, research organisations and SMEs)	Individual SMEs and start-ups
FUNDING	€4 million	€2.5 million	€2.5 million + up to €15 million equity investment via the EIC Fund

The EIC Support Scheme aims to support applicants in EIC calls by the cut-off dates stated in the Horizon Europe EIC work programme, through grants supporting proposal development, business and pitch coaching.

	PATHFINDER	TRANSITION	ACCELERATOR
PROPOSAL DEVELOPMENT	€10,000 Coordinators only	€10,000 Coordinators only	€10,000 2nd stage
BUSINESS COACHING	—	—	€5,000 1st stage
PITCH COACH	—	€2,000 2nd stage	€2,000 1st stage

The scheme requires:

- ▶ *A concept note*
- ▶ *Profiles of 3 consultants being considered for engagement*
- ▶ *De minimis declaration (for profit-making entities)*
- ▶ *Proof of submission*

Cut-offs are 4 months before the relevant EIC deadlines (refer to the EIC Support Scheme rules of participation)

EIC PLUG-IN

The EIC Plug-In is a specialised pathway under the EIC Accelerator programme that enables projects already supported by The Go to Market Accelerator Programme (offered by Xjenza Malta R&I Unit) to bypass the initial Short Application stage and directly submit a Full Application to the EIC Accelerator.

OUR SERVICES



AWARENESS RAISING

Through social media channels such as Facebook and LinkedIn, Xjenza Malta website, training sessions, promotion of brokerage events



ADVISING

One-to-one consultations, partner searches, general queries, preproposal screening



CUSTOMISED SUPPORT

Advising on project management, legal/financial issues of Horizon Europe projects, presentations upon request, support schemes

CLICK THE ICONS BELOW
TO VISIT OUR SOCIAL MEDIA PAGES



CONTACT DETAILS

Get in touch with us on:

horizon.malta@gov.mt

Anthea Fabri - Director

anthea.fabri@gov.mt

National NCP Coordinator
Legal & Financial

Mark Meliak - Deputy Director

mark.meilak@gov.mt

Digital, Industry & Space
Civil Security for Society

Lili Kankaya - Senior Executive

lili.vasileva@gov.mt

Marie Sklodowska Curie Actions
ERC

Tamara Schembri - Senior Executive

tamara.b.schembri@gov.mt

Culture, Creativity & Inclusive Society
Missions
New European Bauhaus
Gender Equality

Isabelle Micallef Bonello - Executive

isabelle.micallef-bonello@gov.mt

Widening
EIT

Frankie Borg - Executive

frankie.borg@gov.mt

Climate, Energy & Mobility
COST
Cities Mission
Climate Mission
Euratom

Aryton Barbara - Executive

aryton.barbara.1@gov.mt

Health
Research Infrastructures

Daniel Micallef - Executive

daniel.micallef.4@gov.mt

Digital, Industry and Space
EIC
EIE

Alessandra Loria - Executive

alessandra.loria@gov.mt

Food, Bioeconomy, Natural Res, Agri & Env.
Oceans Mission
Soil Mission
EIT

Sandra Psaila - Senior Administrator

sandra.psaila@gov.mt

Administrator

