

# European Partnership for Brain Health

Joint Transnational Calls 2026



**BrainHealth**  
*PARTNERSHIP*

**Xjenza Malta's Info Session**

5 February 2026 @ 11:00 CET

Internationalisation Unit

Kaylen Borg  
*Executive*

Ana Cuca  
*Executive*

# Before We Begin

- **This session will be recorded.** Both the presentation and the recording will be made available on the XM website.
- **A dedicated Q&A segment** will follow the presentation.
- During the presentation, we kindly ask that you submit any questions via the chat function.
- To minimize background noise, please keep your microphone muted unless you are invited to speak.

# Technical Units



Space  
Unit

Policy and Strategy  
Unit

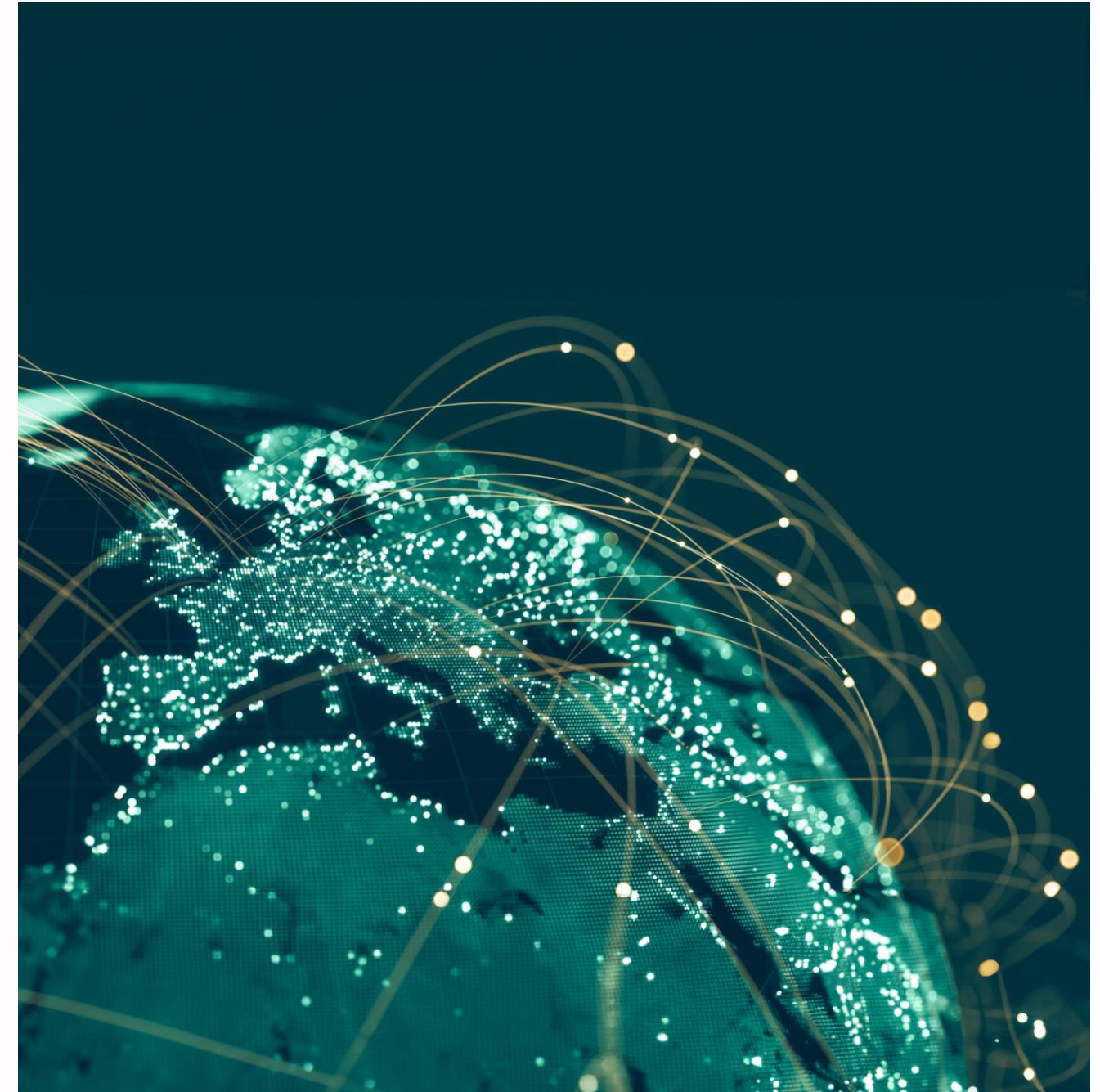
Framework  
Programme Unit

Internationalisation  
Unit

R&I  
Unit

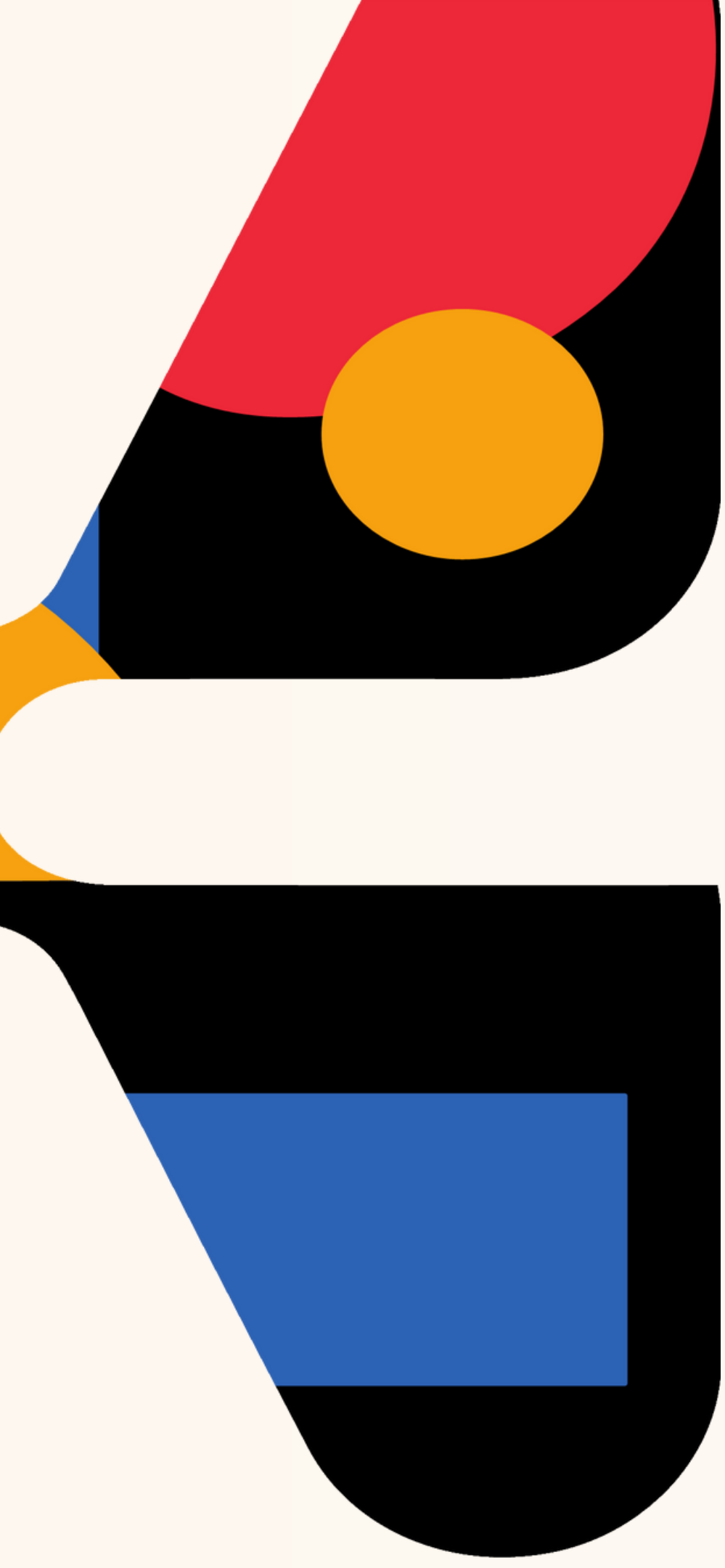
# The Internationalisation Unit

- Follow international trends in Research, Development and Innovation through its representation in international and regional science diplomacy forums
- Strengthen international R&I collaboration amongst local and foreign researchers and stakeholders
- Implements regional and international funding programmes, **using national funds**, aimed at the local R&I stakeholder community



# Internationalisation Funding Portfolio





# Horizon Europe Partnerships

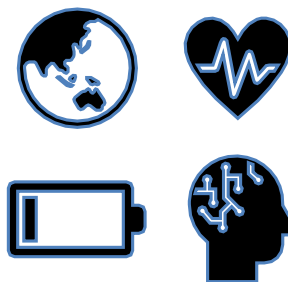
# European Partnerships



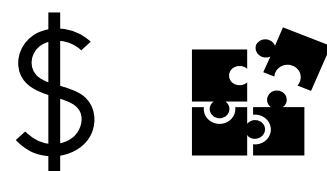
Part of Horizon Europe  
(2021-2027)



European Commission  
+  
National & Private partners



Addressing pressing EU challenges  
*Climate Energy Health Innovation*



Implementing Joint Transnational Calls  
for R&I Project Proposals

## PILLAR II - Global challenges & European industrial competitiveness

## PILLAR III - Innovative Europe

CLUSTER 1: Health	CLUSTER 2: Culture, Creativity, Inclusive Societies	CLUSTER 4: Digital, Industry & Space	CLUSTER 5: Climate, Energy & Mobility	CLUSTER 6: Food, Bio-economy, Agriculture, Env...	EUROPEAN INNOVATION ECOSYSTEMS
Innovative Health Initiative	Resilient Cultural Heritage*	Chips (formerly KDT)	Clean Hydrogen	Circular Bio-based Europe	Innovative SMEs *
Global Health Partnership	Social Transformations and Resilience*	Smart Networks & Services	Clean Aviation	R&I in the Mediterranean Area (Art. 185)	EIT
Transformation of health systems		High Performance Computing	Single European Sky ATM Research 3	Biodiversa+	
Chemicals risk assessment		European Metrology (Art. 185)	Europe's Rail	Climate Neutral, Sustainable & Productive Blue Economy	InnoEnergy
ERA for Health		AI-Data-Robotics	Connected and Automated Mobility	Water4All *	Climate
Rare diseases		Photonics	Batt4EU	Animal Health & Welfare	Digital
One-Health Anti Microbial Resistance		Made in Europe	Zero-emission waterborne transport	Accelerating Farming Systems Transitions	Food
Personalised Medicine		Clean steel – low-carbon steelmaking	Zero-emission road transport	Agriculture of Data	Health
Pandemic Preparedness		Processes4Planet	Built4People	Safe and Sustainable Food System	Raw Materials
Brain Health*		Global competitive space systems	Solar Photovoltaics*	Forests and Forestry for sustainable Future*	Manufacturing
		Innovative Materials for EU*	Clean Energy Transition		Urban Mobility
		Virtual Worlds*	Driving Urban Transitions		Cultural and Creative Industries
		Textiles of the Future*			Water, Marine and Maritime Sectors and Ecosystem*
		Raw Materials for the Green and Digital Transition*			

- Institutionalised partnerships (Art 185/7)
- EIT KICs
- Co-programmed
- Co-funded

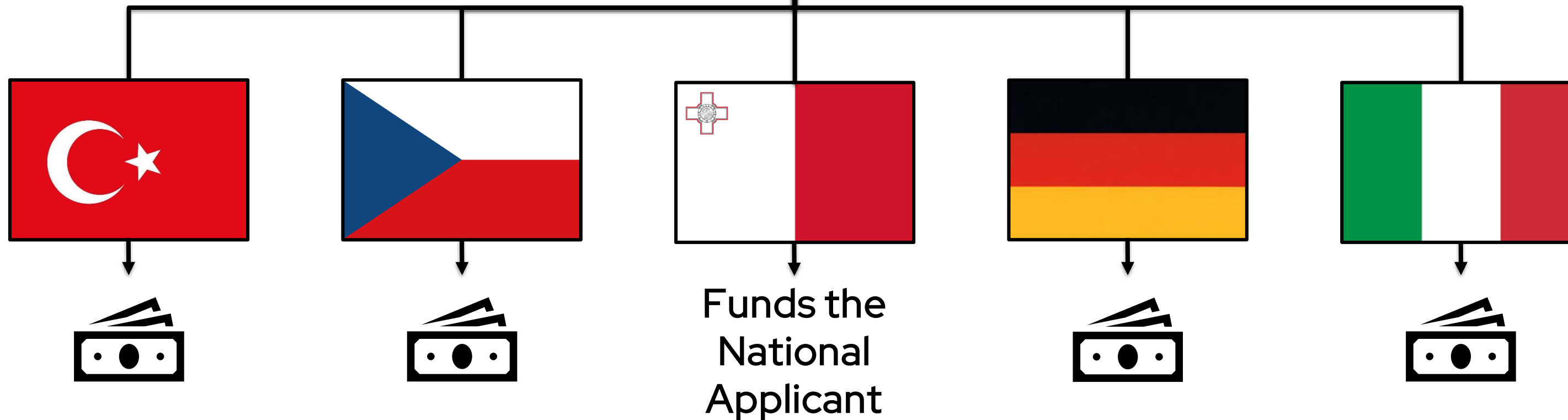
\* Under preparation



### CROSS-PILLARS I AND II

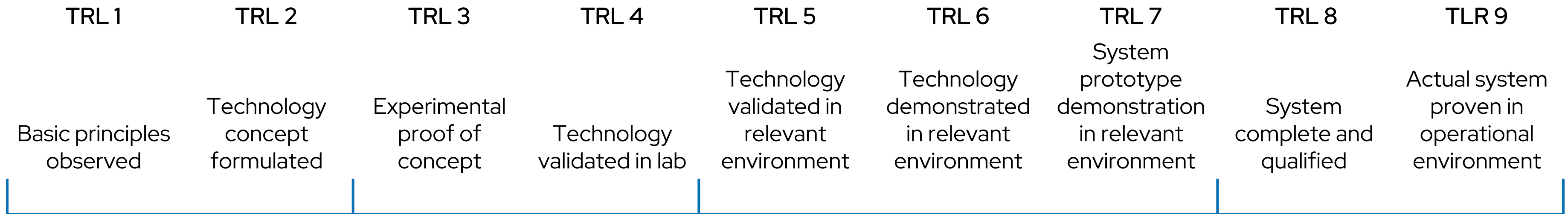
European Open Science Cloud

# Joint Transnational Call



National Partners collaborate through a common call,  
each beneficiary funded by their own national funding agency

# Technology Readiness Level (TRL)





# EP BrainHealth Joint Transnational Calls 2026



BrainHealth  
PARTNERSHIP



Co-funded by  
the European Union

# EP BrainHealth - Introduction

## Vision:

To improve brain health by:

- **Preventing** and **treating** brain diseases,
- **Enhancing the wellbeing** of people living with neurological and mental disorders.

## Mission:

To support brain health R&I, leading to:

- Enhanced **understanding of the brain**
- Translating results into **accessible solutions** for prevention, diagnosis, treatment, and care.

- **54 partners from 33 countries** (EU and beyond)
- Coordinated by German Aerospace Center (DLR)
- Planned budget **EUR 488 M** over 10 years – EUR 3.5 M from Malta
- Launching 14 JTCs (2026–2032)



# 2026 Joint Transnational Calls

Biological, social and environmental factors that impact the trajectory of brain health across the lifespan:

Call 1

In the field of neurological, mental and sensory disorders

&

Call 2

In the field of neurodegenerative disorders



# 2026 Joint Transnational Calls

Applications must:

- Be Interdisciplinary and address at least two of the three factors below:
  1. **Biological** (e.g., genetics, vascular factors, etc.)
  2. **Lifestyle and social** (e.g., nutrition, smoking, sleep, migration, etc.)
  3. **Environmental** (e.g., pollution, pandemics, climate change, microbiota, etc.)
- Investigate at least two of the following aspects:
  1. **Mechanisms of action** of the identified factors;
  2. **Early recognition, diagnosis and prognosis** linked to the identified factors;
  3. **Prevention/treatments/interventions/technological development/care and support** linked to the identified factors

# 2026 Joint Transnational Calls

The following topics/aspects are excluded:

- Applications focusing on **cancers**;
- Applications addressing risk factors that are shared between mental health, neurological, mental and sensory disorders on the one hand, and neurodegenerative disorders on the other are encouraged and **should be submitted to the call that best suits their project.**

Please note that applying with the same proposal to both EP BrainHealth calls is not allowed.

# 2026 Joint Transnational Calls



CALL FOR PROPOSALS FOR **MULTINATIONAL & TRANSLATIONAL** RESEARCH PROJECTS

BIOLOGICAL, SOCIAL AND ENVIRONMENTAL FACTORS THAT IMPACT THE TRAJECTORY OF BRAIN HEALTH ACROSS THE LIFESPAN, IN THE FIELD OF:

**CALL ONE**  
NEUROLOGICAL, MENTAL AND SENSORY DISORDERS

**CALL TWO**  
NEURODEGENERATIVE DISORDERS

CALL DEADLINE  
**10 MARCH 2026**

The poster features a stylized brain graphic on the right side, composed of blue and yellow segments, with a white outline. The background is a dark blue gradient with white and yellow text.

## General Calls Specifications:

- 2-Stage Calls
- Involving national & transnational application
- 500,000 EUR per project for Malta-based applicants
- Projects up to 36 months
- At least 3 independent legal entities from at least 3 Countries participating in the Call
- 1 Project Coordinator

# Joint Transnational Calls 2026

## General Calls Specifications:

- The Consortium Coordinator must submit the proposals via the **EP BrainHealth PT-Outline submission online tool**.
- The total number of research partners in a consortium is **limited to six** (including self-funded partners).
- Consortia including **Underrepresented countries (Including Malta)** may increase the total number of partners to **seven**.
- All Consortium Partners need a **Participant Identification Code (PIC)**.

# 2026 Joint Transnational Calls

## Participating Countries

**Member States:** *Belgium, Croatia, Denmark, Estonia, Finland, France, Germany, Greece, Hungary, Ireland, Italy, Latvia, Lithuania, **Malta**, Netherlands, Poland, Portugal, Romania, Slovakia, Spain, Sweden*

**Associated Countries/Non-EU Countries:**  
*Australia, Iceland, Israel, Moldova, Norway, Taiwan, Turkey*

*Call 1 only: New Zealand, Switzerland*

*Call 2 only: Austria, Luxembourg, Slovenia, Canada*



Access the complete relevant call documentation at: <https://www.brainhealth-partnership.eu/calls/>



---

# National Requirements

# Eligible Entities

Eligible Entities must be registered in Malta and must have an operating base in Malta

Limited Liability  
Company

Partnerships

Non-profit  
making  
Organisations

Voluntary  
Organisations

Professional  
Bodies

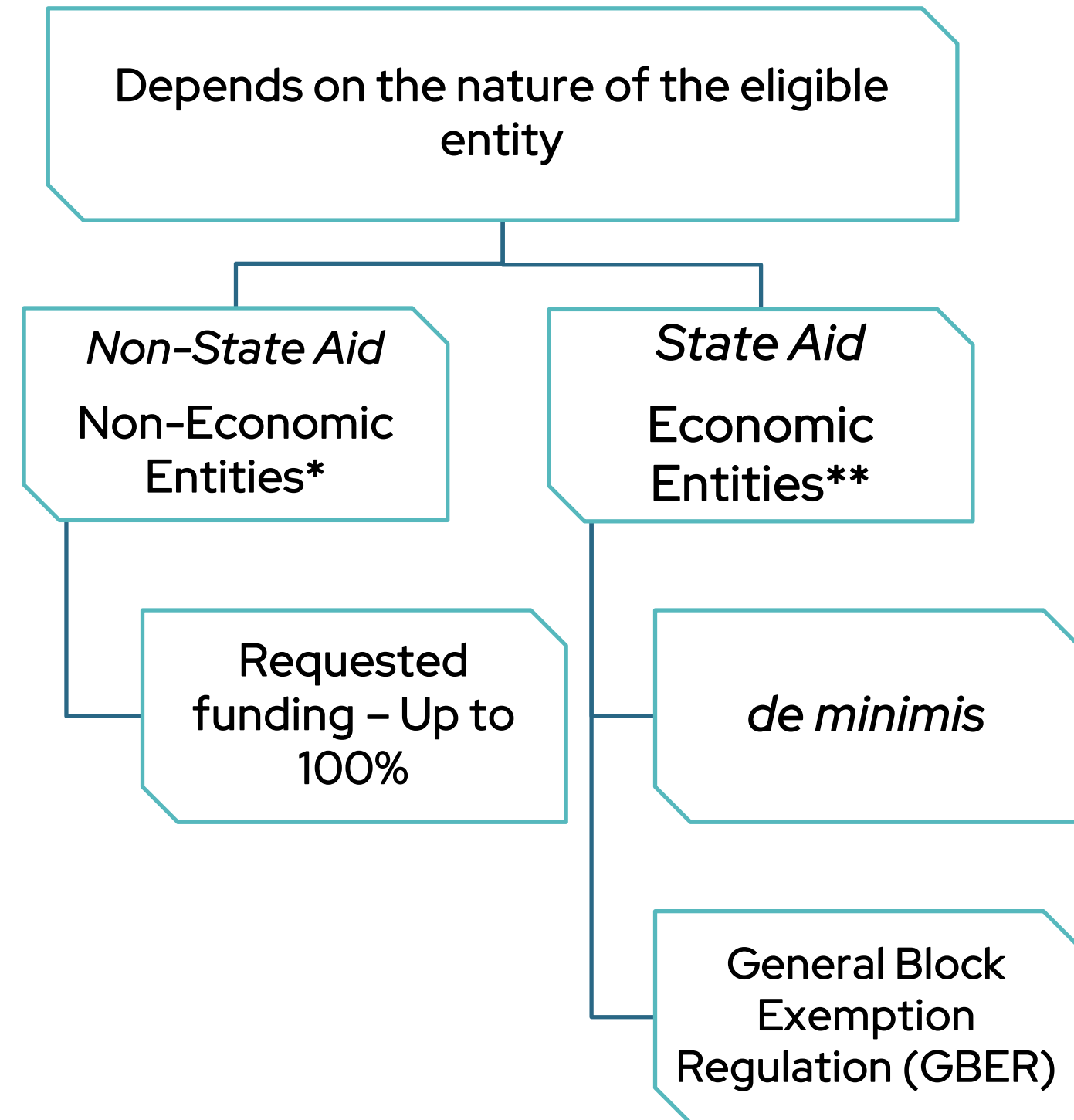
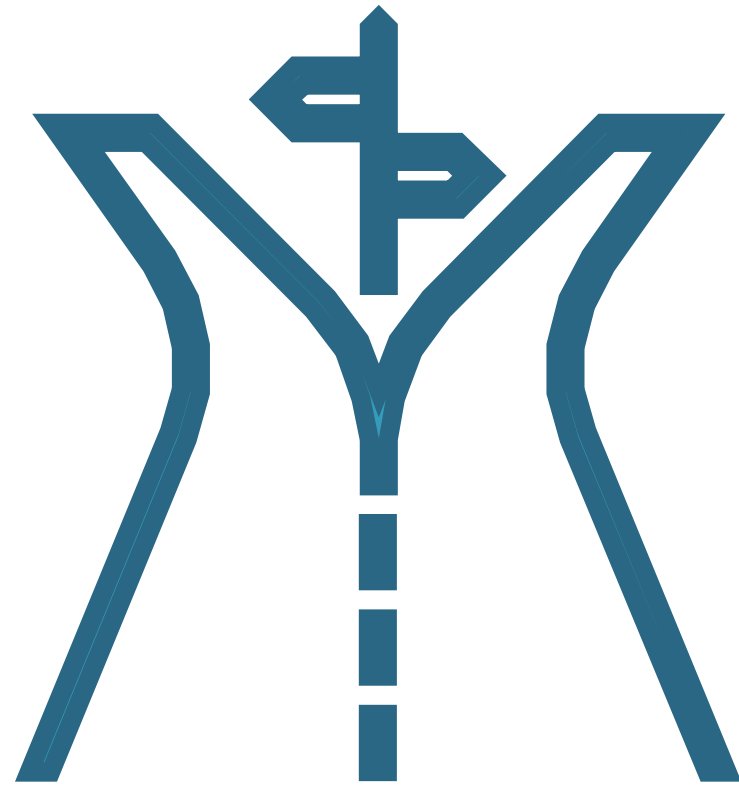
Cooperatives

Public entities

Research &  
Knowledge-  
Dissemination  
Organisations

All Malta-based applicants must comply with the [National Rules for Participation](#).

# Funding Modalities



\* Public Entities and Public Research and Knowledge-Dissemination Organisations that do not carry out an economic activity within the meaning of Article 107 TFEU

\*\* Undertakings that carry out an economic activity within the meaning of Article 107 TFEU.

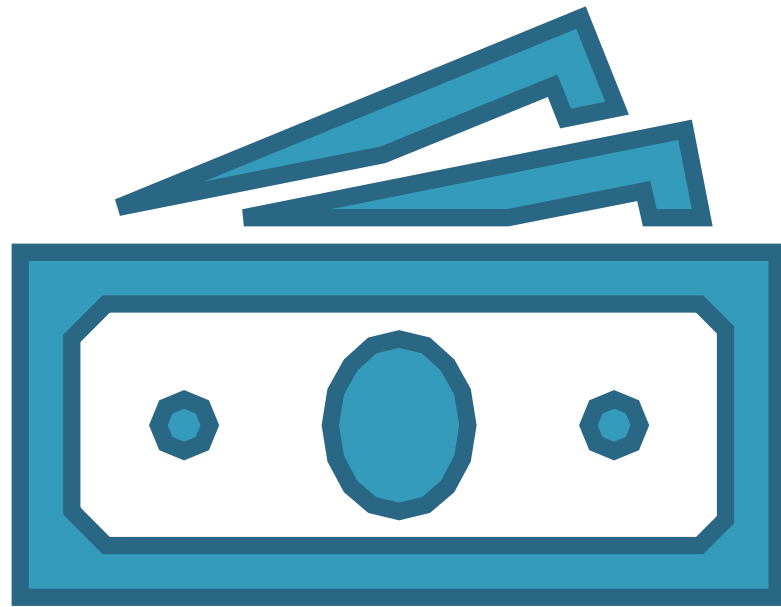
# Aid Intensities

Economic entity	<i>de minimis</i> *	GBER
Requested funding	Up to 75%	Up to 70%
Own contribution	Remainder % (not in-kind)	Remainder % (not in-kind)

Aid Intensity	Undertaking Size		Extra funding for projects prioritizing Effective Collaboration & Wide Dissemination
25%	Small	+ 20%	
	Medium	+ 10%	
	Large	+ 0%	

\*Capping of € 300,000 over 3 years

# Eligible Costs



Personnel costs

Specialised  
Equipment &  
Consumables

Subcontracting

Costs of IP and  
Knowledge  
Transfer activities

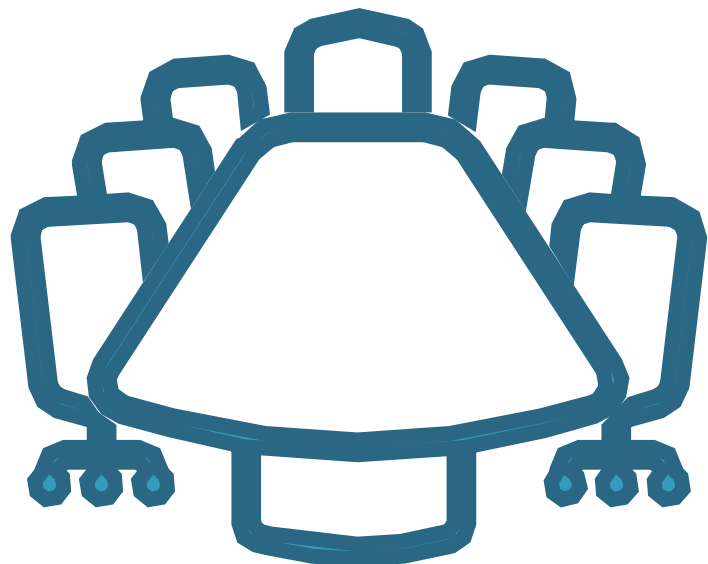
Travel &  
Subsistence

Overheads and  
Other Operating  
Expenses

# Personnel Costs

## Non-economic/de minimis/GBER

- **Project Management – up to 10% of total project value** (*should be allocated to and described within research tasks*)
- **Students – EUR 6,000–8,000 p.a.**
- **Maximum of 1720 hours p.a.**
- **Hourly rates specified in national rules**



€z = (basic salary + allowances) / yearly workable hours of the employee.

Role in Project	Hourly rates in 2027	Hourly rates in 2028	Hourly rates in 2029	Limits per project
Management or equivalent	Up to €63.82/hour	Up to €67.01/hour	Up to €70.36/hour	Max 2 per project
Senior Researcher <sup>2</sup> or equivalent	Up to €44.98/hour	Up to €47.23/hour	Up to €49.59/hour	Max 2 per project
Researcher <sup>3</sup> or equivalent	Up to €32.22/hour	Up to €33.83/hour	Up to €35.52/hour	No limits
Operational, technician, research support assistant or equivalent	Up to €17.67/hour	Up to €18.55/hour	Up to €19.48/hour	No limits

Table 1 Eligible Hourly Rates

The rates stated in the table above are for the years 2027-2029. For subsequent years a 5% increase per year is allowed.

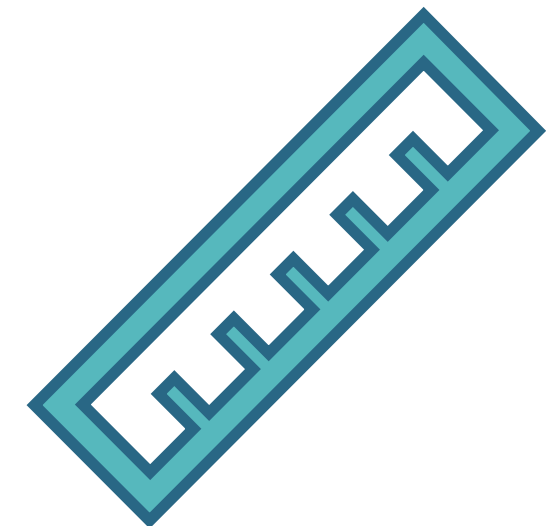
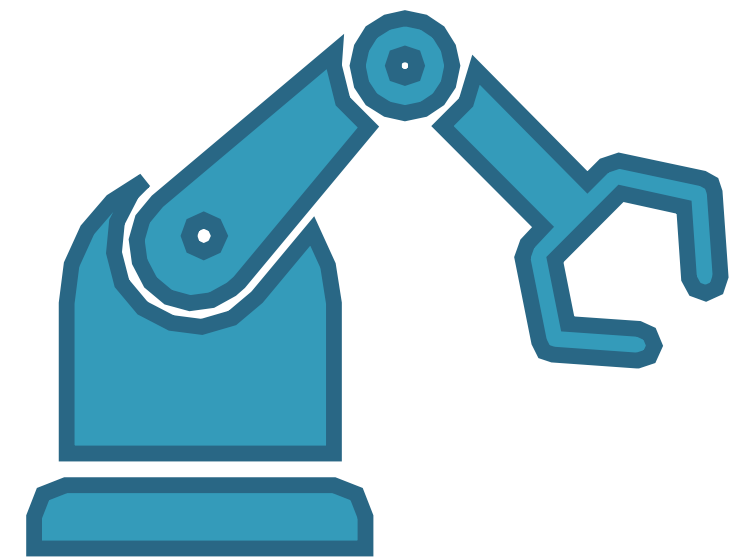
# Equipment and Consumables

## Non-economic / de minimis

- Cost to purchase/lease specialised equipment
- Cost of research consumables should not exceed 30% of the project value

## GBER

- The costs of specialised equipment is only eligible if the lifetime of the equipment is equal to the lifetime of the project.
- Depreciation costs of specialised equipment for the extent and period used for the project. To be verified by a **certified public accountant**
- Cost of research consumables should not exceed 30% of the project value

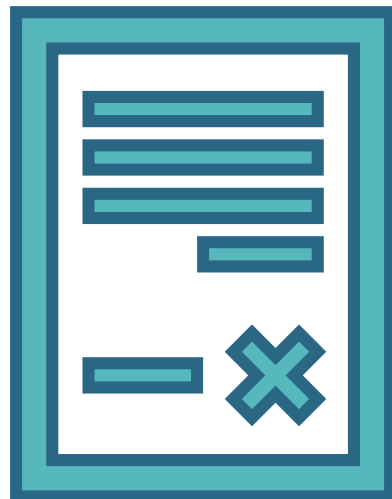


# Subcontracting

## Non-economic/de minimis/GBER

- Allowed up to 25% of the project value
- Must follow fair procurement procedures

*To be discussed with the Call Manager at application stage*



# IP and Knowledge Transfer Activities

## Non-economic/de minimis/GBER

- Costs of knowledge transfer activities and patents bought or licensed from outside sources at arm's length conditions.

*To be discussed with the Call Manager at the application stage*



# Travel and Subsistence

## Non-economic /de minimis

- Economy flights, and public transport (most economic solutions) and per diems for up to 14 days in a row.
- For the attendance of consortium meetings, up to two persons will be eligible to attend the meeting.
- For the attendance of international conferences, up to two persons will be eligible to attend every six months.

## GBER

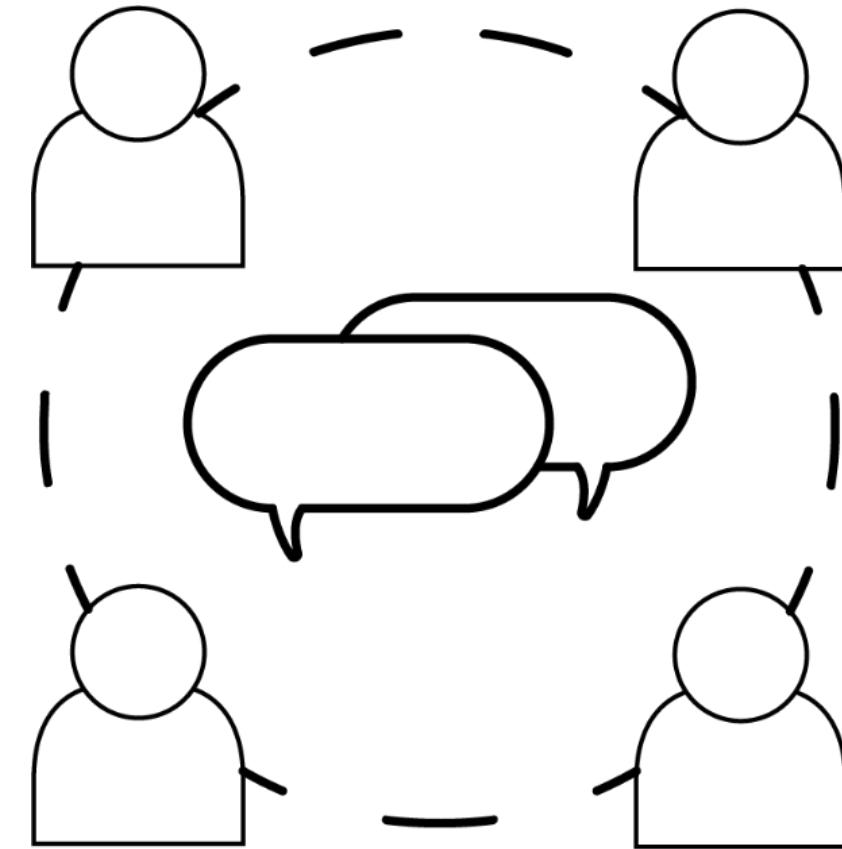
- Travel costs are not eligible.



# Overheads and Other Operating Expenses

## Non-economic/de minimis/GBER

- Are costs that are incurred **directly** as a result of the project.
- These will be covered at 20% of direct eligible costs claimed.



# Ineligible Costs

- Expenses related to loans, interests etc.
- Expenses which are recoverable through other funding mechanisms
- Re-purchase of the same equipment originally procured through other funding mechanisms
- Purchase and/or leasing of equipment and services from partners or their subsidiaries
- Standard office equipment
- Personnel hours for travelling
- Any other costs that are not listed as eligible costs in the National Rules





# Application Process

# Application Process: Pre-proposal Stage

1

Submit the National Application Form and relevant annexes *via* email to [eusubmissions.xjenzamalta@gov.mt](mailto:eusubmissions.xjenzamalta@gov.mt) by 10 March 2026 23:59 CET.

2

The **Project Coordinator** submits the **Pre-Proposal** to the Partnership (jointly with the other partners) via the **PT-Outline online submission tool** by 10 March 2026 14:00 CET.

3

Xjenza Malta will perform an **administrative check** on the documents provided from your end. If **all partners** are found **eligible** by their respective **funding agency**, the proposal will be **evaluated and ranked**.

# Submission Procedure – Stage 1

## Stage 1: Pre-Proposal Submission

- The coordinator creates an account on PT-Outline Online Submission Tool.
- The coordinator adds partners to the consortium. Partners can input their own data and need to **validate** their participation.
- Required indicative budget for each partner. Category budgets can be indicative, but the **total cannot increase**.
- National documentation and annexes as per National Rules.

Documents	Public entities	Public RKDOs	<i>de minimis</i>	GBER
<i>Pre-Proposal Stage (Stage 1)</i>				
<i>National Application Form</i>	X	X	X	X
<i>Public entities - Annex</i>	X			
<i>Public RKDOs - Annex</i>		X		
<i>CVs</i>	X	X	X	X
<i>Memorandum &amp; Articles of Association (Or any respective constitutive documents)</i>			X	X

# Submission Procedure – Stage 2

## Stage 2: Full Proposal Submission (Upon Invitation)

- The Secretariat will send the full-proposal application template to coordinators of those proposals invited to stage 2.
- Required **detailed budget** for each partner.
- Coordinator submits the full-proposal on behalf of the partners
- Further national documentation and annexes as per national Rules.

Documents	Public entities	Public RKDOs	<i>de minimis</i>	GBER
<i>Full Proposal Stage (Stage 2)</i>				
<i>Budget Breakdown Form</i>	X	X	X	X
<i>de minimis Form</i>			X	
<i>Enterprise Size Declaration Form &amp; Undertaking in Difficulty</i>				X
<i>Declarations for Augmented Aid Intensity</i>				X
<i>Audited financial statements (last 3 years)*</i>			X	X

*\*start-ups that do not have the above documents available, please provide financial projections for three (3) years signed by an auditor*

# Submission Documents - Attachments

The image shows a screenshot of the Xjenza Malta website. The navigation menu at the top includes 'About Us', 'What We Do', 'Funding Schemes', 'Media', 'Esplora', 'Villa Bighi', and 'Contact Us'. The 'Funding Schemes' menu is open, showing 'Open Funding Schemes', 'Closed Funding Schemes', and 'Resources Page'. A green arrow points from the 'Resources Page' menu item to a grey box labeled 'Resources Page'. A blue arrow points from the 'Funding Schemes' menu to a call for applications banner. The banner features the text 'Creating the best possible environment for R&I to flourish.' and 'Xjenza Malta'. Below the banner is a call for applications for the 'EUROPEAN PARTNERSHIP FOR BRAIN HEALTH' with the text 'CALLS NOW OPEN'. Below the call for applications is a list of documents: 'National Rules for Participation' and 'National Application Form'. A green box contains the text 'Relevant Annexes can be found here'.

Xjenza Malta

Creating the best possible environment for R&I to flourish.

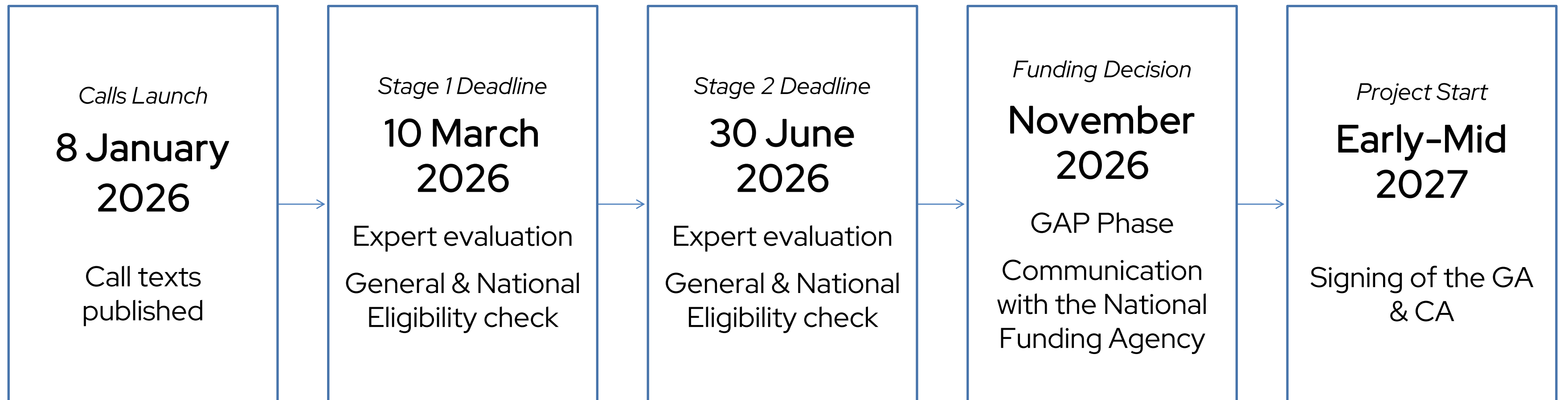
Resources Page

Resources Page

- Relevant Annexes can be found here

- National Rules for Participation
- National Application Form

# Timeline of Calls



# Get Connected with Partners

When looking for partners, please check the following resources:

**PART**   
**FINDER**

[Partnership  
Partner Search  
Tool](#)



[HE Funding &  
Tender Portal](#)

  
plumtri

[https://www.plumtri.org  
/member/login](https://www.plumtri.org/member/login)

Alternatively, you can also contact us directly for guidance.

# Summary

Step	Action	Notes / Guidance
1. Check Calls	<a href="#">Visit the BrainHealth Calls webpage</a>	Look for Calls 2026
2. Call Launch	Review the respective Partnership Call Text	Contains specifications, eligibility criteria, and deadlines
3. Partner Search	Use Partnership matchmaking tool (if available)	Helps you connect with project partners
4. National Rules	<a href="#">Review Xjenza Malta's EP BrainHealth 2026 National Rules for Participation</a>	Ensure eligibility under national requirements
5. Writing and Submission of Scientific Pre-Proposal	Project Coordinator submits Pre-Proposal to the Partnership (jointly with the other partners)	<b>Deadline:</b> 10/03/2026 14:00 CET
6. National Application	Malta-based applicants Submit National Application Form and relevant annexes to <a href="mailto:eusubmissions.xjenzamalta@gov.mt">eusubmissions.xjenzamalta@gov.mt</a>	<b>Deadline:</b> 10/03/2026 23:59 CET

Any Questions?





**BrainHealth**  
*PARTNERSHIP*

# CONTACT

xjenzamalta.mt



[kaylen.borg.1@gov.mt](mailto:kaylen.borg.1@gov.mt)

[ana.cuca@gov.mt](mailto:ana.cuca@gov.mt)



[eusubmissions.xjenzamalta@gov.mt](mailto:eusubmissions.xjenzamalta@gov.mt)

+356 2360 2152



XJENZA MALTA  
VILLA BIGHI, DAWRET FRA GIOVANNI BICHI  
KALKARA, KKR 1320

